



2" 10 WATT SOLSTICE SOLO LED POD



**HIGH OUTPUT 2" SQUARE COMPACT DESIGN
ULTIMATE USABILITY AND PORTABILITY**

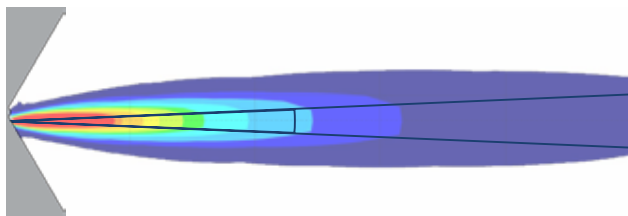
- Highest Light Output Per Cubic Inch on the Market
- Expand to Create Multiple Bar Solutions
- Less than 1 Amp Power Consumption
- Omni-Link Interlocking System
- Adjustable Mounting Bracket

10° Narrow Beam

PART #	XIL-S1100	XIL-S1100W
HOUSING	Black	White



10° Optics

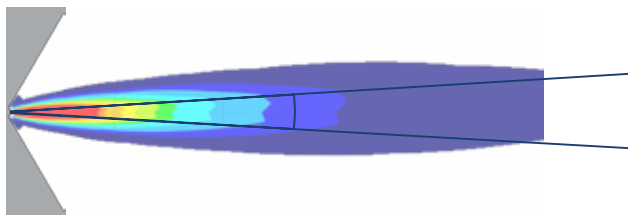


15° Medium Beam

PART #	XIL-S1102	XIL-S1102W
HOUSING	Black	White



15° Optics



**10
WATT
L.E.D.S**

**9-50V
DC INPUT**

**DC
DIE-CAST
HOUSING**

**IP-68
WATERPROOF**

**COLORED
LEDS
AVAILABLE**

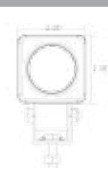
**EX
EXTENDED
WARRANTY**

SPECIFICATIONS

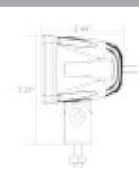
WARRANTY	Extended
AVAILABLE HOUSING COLOR	Black or White
LUMENS (2800mA)	900 Lm
WATTAGE	10
WEIGHT	0.50 Lbs
LED LIFESPAN	50,000 Hours

IMAGES

FRONT



SIDE



TECHNICAL DETAILS

DIMENSIONS	3.25" x 2.44" x 2.05"
OPTIC PURITY	88%
DRIVEN AT	80%
INPUT VOLTAGE	9-50V DC
AMP DRAW (12V)	0.83A
IP RATING	IP-68
VIBRATION RATING	15.6 G _{rms}
CERTIFICATIONS	CE
OPERATING TEMP	-40 Celsius ~ +80 Celsius

ADDED FEATURES

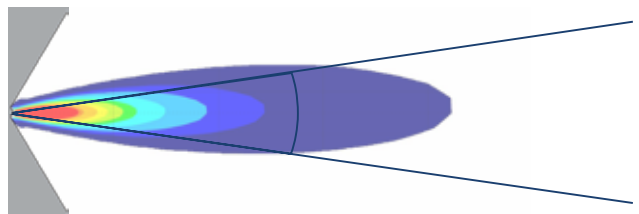
- Weatherproof Deutsch Connector
- Die-Cast Aluminum Housing
- Polycarbonate Lens
- Patent # D610,725 S

35° Wide Beam

PART #	XIL-S1101	XIL-S1101W
HOUSING	Black	White



35° Optics

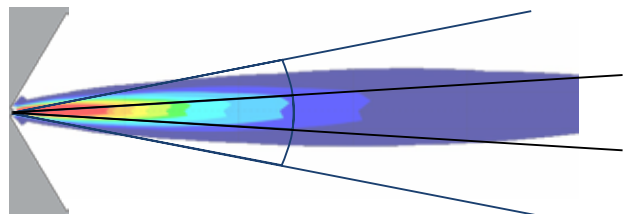


45°/15° Elliptical Beam

PART #	XIL-S1103	XIL-S1103W
BEAM SIZE	45° Horizontal 15° Vertical	45° Horizontal 15° Vertical
HOUSING	Black	White



45°/15° Optics



XTREME LED